



URBAN CREST

3/4 BHK PREMIUM HOMES



Gurukripa homes, 12-20, Shyam Vatika, Manyawas, Mansarover

experience
life at the top





ASPIRATIONAL
BEAUTIFUL
COMFORTABLE
RELAXING

3/4
BHK FLATS

S+6
FLOORS

48
APARTMENTS



An Iconic Residential Masterpiece with a Distinct Character, Setting New Standards of Luxury Living.

Crafted by some of the country's leading architects and visionaries, this iconic project embodies luxury and exclusivity at its finest.

With over 30 years of unparalleled expertise behind it, Urban Crest isn't just a residence — it's a timeless legacy for those who settle for nothing less than exceptional.





Fully Equipped Gym

ULTIMATE WORKOUT EXPERIENCE

Stay fit and energized with our fully equipped, modern gym featuring the latest cardio and strength training machines. Designed to cater to all fitness levels, it offers a motivating environment to help you achieve your health goals without leaving home.



Experience the magic of cinema right at home with our cozy mini theater. Perfectly designed for immersive movie nights, family gatherings, or binge-watching your favorite shows in style and comfort. Equipped with high-quality sound and crystal-clear visuals, it brings the ultimate entertainment experience to your doorstep. Relax, unwind, and enjoy blockbuster moments anytime without stepping out.

Mini Theater

**EXCLUSIVE
SCREENING
SPACE**



Multipurpose Hall

HOST CELEBRATE CONNECT

A thoughtfully designed space to host celebrations, meetings, cultural events, and more. The multipurpose hall adapts to your every need — elegant, spacious, and fully equipped for any occasion.

Create unforgettable moments in a venue that brings people together seamlessly.

Gated Township Living – Where Security Meets Serenity.

Enjoy a lifestyle of comfort and convenience with Three-Tier Security ensuring round-the-clock safety, High-Speed Elevators for effortless access, Ample Car Parking Space for residents and guests, Power Backup for Common Areas to ensure uninterrupted functionality, and a reliable 24x7 Water Supply for your daily needs. Every detail is designed to enhance your peace of mind and ease of living.



CCTV Camera

High-Speed Elevators

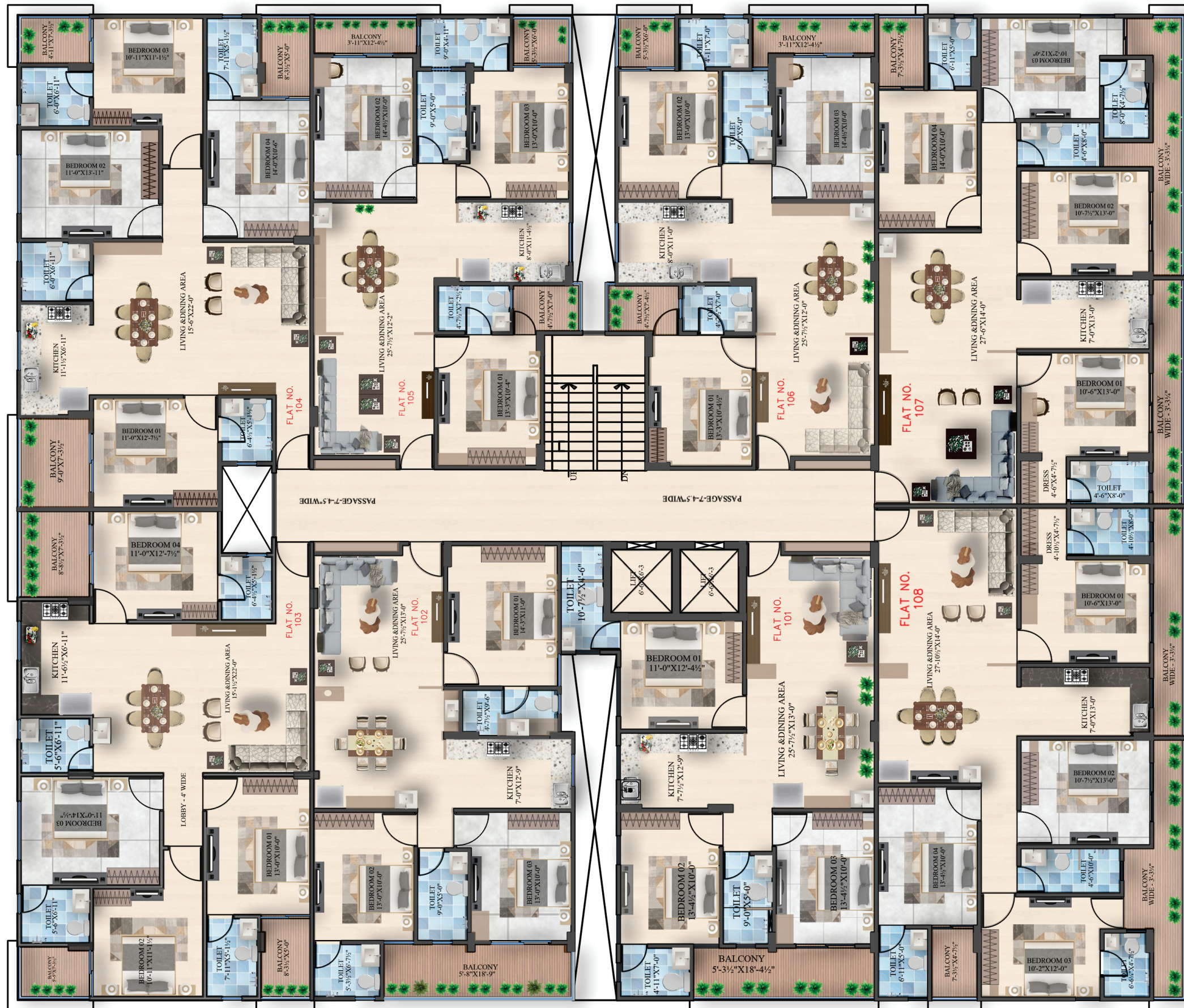


24x7 Water Supply

Ample Car Parking Space

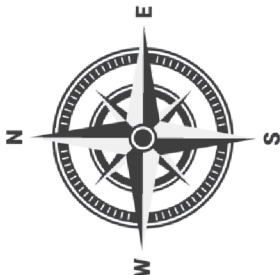


**Power Backup For
Common Areas**



Typical Floor Plan

Flat No.	Category	SBUA(sqft)
101	3BHK	1718.74
102	3BHK	1729.71
103	4BHK	2100.32
104	4BHK	2111.96
105	3BHK	1708.17
106	3BHK	1705.01
107	4BHK	2251.77
108	4BHK	2267.1



Stilt Floor Plan





Terrace Floor Plan



Basement Floor Plan

Layout Flat No. 101

Type - 3BHK

Super Built Up Area - 1718.74 Sq. Ft.



Layout Flat No. 102

Type - 3BHK

Super Built Up Area - 1729.71 Sq. Ft.



Layout Flat No. 103

Type - 4BHK

Super Built Up Area - 2100.32 Sq. Ft.



Layout Flat No. 104

Type - 4BHK

Super Built Up Area - 2111.96 Sq. Ft.



Layout Flat No. 105

Type - 3BHK

Super Built Up Area - 1708.17 Sq. Ft.



Layout Flat No. 106

Type - 3BHK

Super Built Up Area - 1705.01 Sq. Ft.



Layout Flat No. 107

Type - 4BHK

Super Built Up Area - 2251.77 Sq. Ft.



Layout Flat No. 108

Type - 4BHK

Super Built Up Area - 2267.10 Sq. Ft.







Scan QR Code



LOCATION
ADVANTAGE

EASY ACCESS FROM EVERYWHERE

- | | |
|--------------------------------|--------|
| • Airport | 8.5 km |
| • Metro Station | 1.5 km |
| • Gandhi Nagar Railway Station | 8 km |
| • Durgapura Railway Station | 7.5 km |
| • Jaipur Junction | 10 km |
| • ISKCON Temple | 3 km |
| • Petrol Pump | 0.5 km |

HEALTH AT YOUR DOORSTEP

- | | |
|---------------------------|--------|
| • Dhanwantari Hospital | 3 km |
| • Fortis Hospital | 8.5 km |
| • Metro Mas Hospital | 4.5 km |
| • SMS Hospital | 12 km |
| • Mahatma Gandhi Hospital | 17 km |
| • Saket Hospital | 3 km |

EASY DAILY CONVENIENCES

- | | |
|---------------------|--------|
| • Mansarovar Plaza | 3 km |
| • D'Mart | 7 km |
| • Reliance Fresh | 1 km |
| • Vijay Path Market | 5.5 km |

MAJOR BANKS / ATMS

- SBI · HDFC · Axis · BOI · Kotak · ICICI

WORLD CLASS EDUCATION AT PROXIMITY

- | | |
|-------------------------------|------|
| • Neerja Modi School | 4 km |
| • Seedling Modern High School | 4 km |
| • Arvind Shri Vidya Mandir | 5 km |
| • St. Wilfred's College | 5 km |
| • St. Anselm's School | 4 km |
| • IIS University | 6 km |
| • India International School | 4 km |

LUXURY WITHIN RANGE

- | | |
|-----------------------|--------|
| • Hotel Hyatt Regency | 3 km |
| • Clarks Amer | 8.5 km |
| • Hotel Radisson Blu | 8 km |
| • Hotel Marriott | 8 km |
| • Hotel The Lalit | 8 km |

ENTERTAINMENT WITHIN REACH

- | | |
|--------------------------|--------|
| • Galaxy Cinema | 6 km |
| • Cityplex | 7 km |
| • Entertainment Paradise | 8 km |
| • Gaurav Tower | 8.5 km |
| • WTP | 8.5 km |
| • GT Central | 8.5 km |
| • Jaipur Central Mall | 8.5 km |

A PROJECT BY: SHREE GURUKRIPA HOMES

Disclaimer: Builder and Developers reserve the right to change any design and specification of the building without any prior notice and information. This brochure is for illustration purpose only and it cannot be in any way treated as a legal document. All information, specifications, plans material and visual representation contained in the brochure, model & sample flat are subject to change from time to time by the developer and/or the competent authorities and shall not form part of the offer or contract